
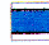





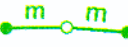
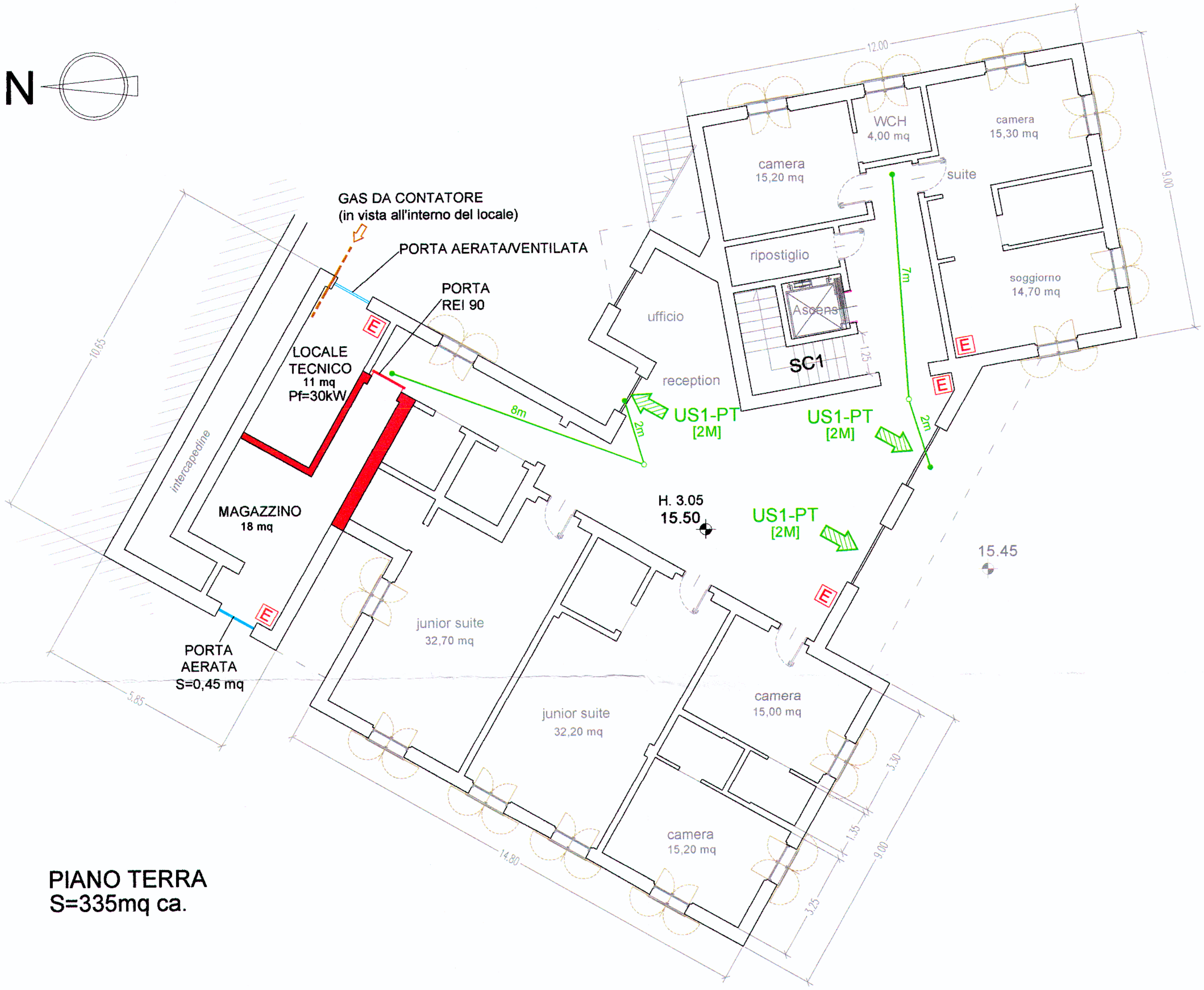
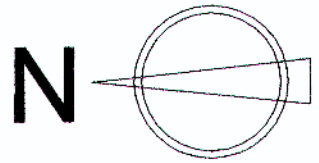


PROGETTISTA	Dott.Ing. Maurizio Murialdo, tel.:0185-324474 Corso Dante 50/4A, 16043 Chiavari (GE) Albo Ingegneri Prov.GE n.4407.I.0151	DATA	Giugno 2015
COMMITTENTE	Caffarata Andrea, Caffarata Alessandro	SCALA	1:100
LOCALITA'	Via Fabbrica Valle - 16039 Sestri Levante (GE)	TAVOLA	2
PROGETTO	Complesso turistico alberghiero < 25 p.l.	RIF.PROG.n°	07/15
OGGETTO	Pianta Piano Terra		

Piante progetto architettonico fornite da Dott. Arch. Felice Pelle, Sestri Levante GE.

LEGENDA			
	Estintore		Struttura REI 60
	Via di fuga in piano		Porta tagliafuoco REI 60
	Via di fuga in discesa		
	Struttura REI 90		
	Porta tagliafuoco REI 90		
	Via d'esodo Partenza, svolta, arrivo, lunghezza		



PIANO TERRA
S=335mq ca.